

SKYSCRAPER REALTECH PROPERTIES LLP.

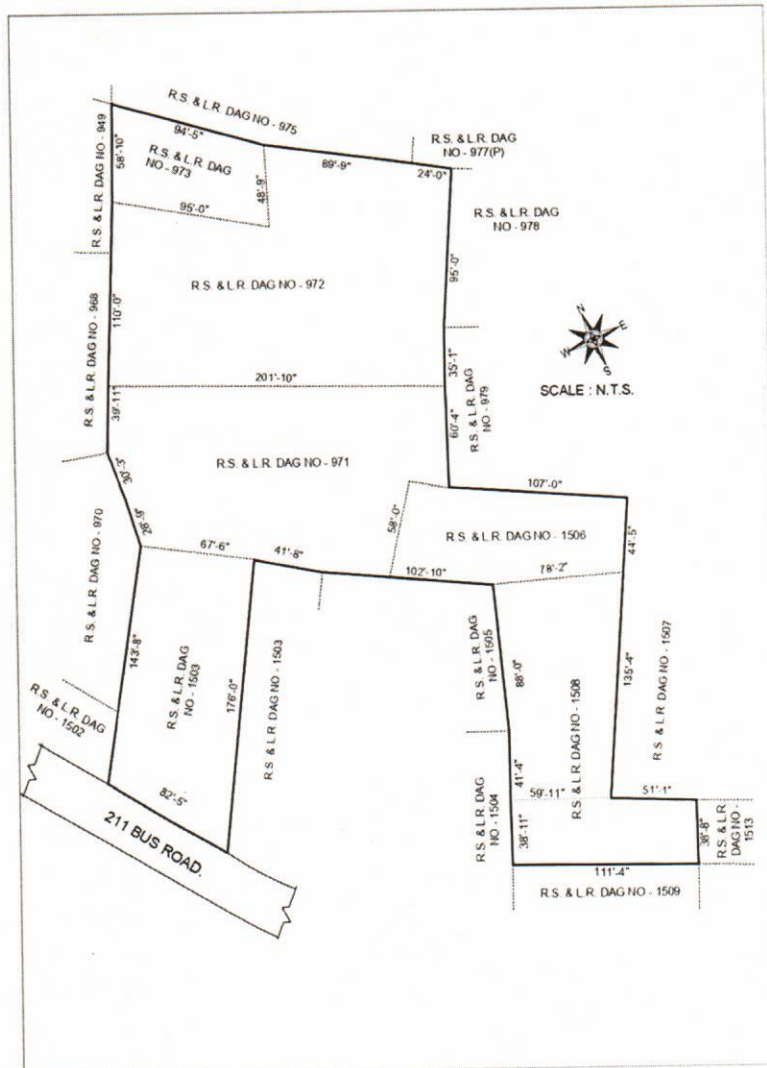
A Unit of Realtech Group

LLPIN: ABC-1878

(033) 2570 7991

www.realtechnirman.com

accounts@realtechnirman.in



Latitude

22°36'06.1" N

Longitude

88°30'21.0" E

LOCATION DETAILS

PROJECT: ASTHA

Site:

Mouza Jalampara, J.L. No. 42, L.R. Dag Nos. 971,972,973,1503,1506,1508, corresponding L.R. Khatian Nos.4036, 4037, 4038, 4039, 4040, 4041, 4042, 4044, 4045, 4047, 4048, 4051, 4052, 4053, 4054, 4055, 4056, 4075, 4079, 4080, 4081, under Police Station Rajarhat, within the limits of Rajarhat Bishnupur-II, Gram Panchayat under Rajarhat Panchayat Samity, District North 24 Parganas.

Boundary Of Project:

On the North : RS/LR Dag Nos. 975, 977.

On the East : RS/LR Dag Nos. 978, 979, 1507, 1513, 1503

On the South : 80 Feet wide PWD Road and RS/LR Dag Nos. 1503, 1505, 1509.

On the West : RS/LR Dag Nos. 949, 968, 970, 1502.

SKYSCRAPER REALTECH
PROPERTIES LLP
Shankar
Partner

Premises No. 04-0583, Plot No. AA-11B/3296, Category - MIG-I, Action Area - 11B, North 24 Parganas, West Bengal - 700161